





Verse I

9 10

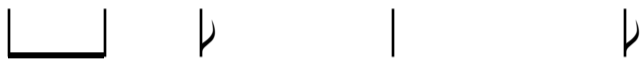
TAB 11 12 X X 11 12 12 12 12 12 14 12 14 12



11 12

TAB 15 12 14 14 12 12 12 12 12 12 14 12

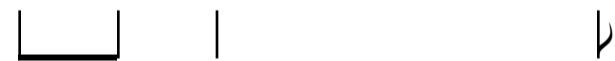
full



13 14

TAB 14 12 14 12 14 14 14

full



15 16 17

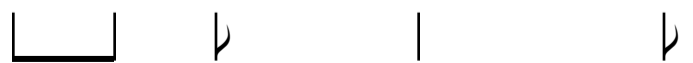
TAB 11 14 12 12 12 14 12 14 14 14 11 12 12 12



18 19

TAB 12 14 12 14 12 14 12 15 12 14 14 12

full



20 21

TAB

12 — 12 — 12 — 12 — 12 — 12 — 14 — 12 | 14 — 12 — 14 — } — / — 12

full



22 23

TAB

14 — 12 — 14 — 12 — 14 — 14 — 14 | 11 — 14 — 12 — / — 12 — 14



Chorus I

24 25 26

TAB

12 — 14 — } — } — 12 — 12 | 15 — 12 — 14 — 14 — 14 — full | 12 — 14 — full — }

full

full



27 28 29

TAB

12 — 12 — } — 12 — (12) — 12 — 12 — 12 — 15 — 12 — 15 — (15) — 12 — } — } — 14 —



30 31

TAB

(14) — 12 — 14 — 12 — 14 — X — 14 — (14) — 12 — 14 — / — 12 — / — 14 —



32 33

TAB (14) 12 14 12 14 14 (14) 12 14 12 14

34 35 36

TAB 12 14 } } 9 11 12 } } 14 12 14 } } 9

Verse II

37 38

TAB 11 12 } } X X 12 12 12 14 12 14 12

39 40

TAB 15 12 14 14 full 12 12 12 12 12 12 14 12



41 42

TAB 14 12 14 full } } 12 14 12 14 12 14 14 14



43 44 45

TAB

11 14 12 12 14 12 14 12 14 11 12 12 12 12

□ | | □ | | □

46 47

TAB

12 14 12 14 12 14 12 15 12 14 14 12

| | □ | | □ | | | |

full

48 49

TAB

12 12 12 12 12 12 14 12 14 12 14 12

□ | □ | □ | □ | □ | | |

full



50 51

TAB

14 12 14 12 14 12 14 14 11 14 12 12 12 14

□ | □ | □ | □ | □ | | |

Chorus II

52 53 54

TAB

12 14 12 12 15 12 14 14 14 12 14 14 12 14 14

□ | □ | □ | | | | |

full

full



55 56 57

TAB

12-12 12 (12)-12-12-12-15 12-15 (15)-12 14



58 59

TAB

(14)-12-14 12-14 X-14 (14)-12-14 12 14

60 61 62

TAB

(14)-12-14 12-14 14 (14)-12-14 12 14 14 12 14 14

full



63 64 65

TAB

12-12 12 (12)-12-12-12-15 12-15 (15)-12 14



66 67

TAB

(14)-12-14 12-14 X-14 (14)-12-14 12 14

68 69

TAB

(14) 12 14 12 14 14 (14) 12 14 12 14

Bridge

70 71

TAB

2 2 2 2 2 2 2 2

72 73

TAB

2 2 2 2 2 2 2 2

74 75

TAB

2 2 2 2 2 2 2 2

76 77

TAB

2 2 2 2 2 2 2 2



78 79

T		X	X	12	X	X	12	14	X	X	12	X	X	12	14	(14)
A	/	X	X	12	X	X	12	14	X	X	12	X	X	12	14	(14)
B		X	X	12	X	X	12	14	X	X	12	X	X	12	14	(14)



80 81

T		X	X	12	X	X	12	14	X	X	12	X	X	12	14	(14)
A	/	X	X	12	X	X	12	14	X	X	12	X	X	12	14	(14)
B		X	X	12	X	X	12	14	X	X	12	X	X	12	14	(14)



82 83

T		X	X	12	X	X	12	14	X	X	12	X	X	12	14	(14)
A	/	X	X	12	X	X	12	14	X	X	12	X	X	12	14	(14)
B		X	X	12	X	X	12	14	X	X	12	X	X	12	14	(14)



84 85

T		X	X	12	X	X	12	14	X	X	12	X	X	12	14	(14)
A	/	X	X	12	X	X	12	14	X	X	12	X	X	12	14	(14)
B		X	X	12	X	X	12	14	X	X	12	X	X	12	14	(14)



Solo

86 87

T		2			7	(7)	<7>	<7>	<9>
A		2			7	(7)	<7>	<7>	<9>
B		2			7	(7)	<7>	<7>	<9>



T T T T

88

TAB notation for measure 88. The staff shows fret numbers 15, 10, 14, 15, 14, 12, 10, 14, 15, 14, 12, 10, 14, 15, 14. A slur covers frets 15-10, with a <9> symbol. Another slur covers frets 14-15, with a (16) symbol. A slash with a dot is present after fret 15.

Fretboard diagrams for measure 88. The first diagram shows frets 15-10. The second and third diagrams show frets 14-15 with a bracket labeled '5'. The fourth diagram shows frets 14-15 with a bracket labeled '6'.

T T



89

TAB notation for measure 89. The staff shows fret numbers 12, 10, 14, 15, 14, 12, 10, 14, 15, 14, 12, 10, 12, 13, 12, (12). A slur covers frets 12-10. A slur covers frets 14-15. A slur covers frets 14-12. A slur covers frets 10-12. A slur covers frets 13-12. A slur covers fret (12).

Fretboard diagrams for measure 89. The first diagram shows frets 12-10 with a bracket labeled '6'. The second diagram shows frets 14-15 with a bracket labeled '6'. The third diagram shows frets 14-12. The fourth diagram shows frets 10-12.

90

TAB notation for measure 90. The staff shows fret numbers (19), 12, 15, 19, 12, 19, 15, 12, 14, 12, 19, 15, 15, 14, 12, 15. A slur covers frets 12-15. A slur covers frets 19-12. A slur covers frets 14-12. A slur covers frets 19-15. A slur covers frets 15-14. A slur covers frets 12-15.

Fretboard diagrams for measure 90. The first diagram shows frets 12-15. The second and third diagrams show frets 19-12 with a bracket labeled '5'. The fourth diagram shows frets 19-15 with a bracket labeled '5'.

91

TAB notation for measure 91. The staff shows fret numbers 12, 15, 12, 14, 15, 12, 15, 12, 12, 14, 14, 12, 15, 15, 12. Slurs connect 12-15, 12-14, 15-12, 15-12, 14-14, 14-12, 15-15, 15-12. Arrows labeled 'full' point to frets 14, 14, 15, 15.

Fretboard diagrams for measure 91. The first diagram shows frets 12-15 with a bracket labeled '7'. The second diagram shows frets 14-14. The third diagram shows a slash with a dot. The fourth diagram shows frets 15-12.

92

TAB notation for measure 92. The staff shows fret numbers 15, 17, 22, 15, 17, 20, 15, 12, 14, (14), 12, 0. A slur covers frets 15-17. A slur covers frets 22-15. A slur covers frets 17-20. A slur covers frets 15-12. A slur covers frets 14-(14). A slur covers frets 12-0. An arrow labeled 'full' points to fret (14).

Fretboard diagrams for measure 92. The first diagram shows frets 15-17 with a bracket labeled '3'. The second diagram shows frets 22-15. The third diagram shows a slash with a dot. The fourth diagram shows frets 17-20 with a bracket labeled '3'.

93

TAB

(0)  $\uparrow$ 9> <9> 7 9 9 7 (7) X

X  
X

94

TAB

3 3 0 3 3 0 3

full full full

95

TAB

3 0 3 3 0 2 <2.4> (12)

full full

96

TAB

7/12 12 15 12 12 15 (15) 12 12 14 (14) 12 14 15 8 13 15

full full full

97

TAB

12 14 (14) 12 14 15 8 13 15

full

98

TAB

8 12 15 8 12 15 8 12 15 8 12 15 8 12 15 8 12 15 11/12 13 17





107 108

TAB (14) 12 14 . 12 . 14 (14) 12 14 12 14 . 14

Diagram showing fret positions and string bends for measures 107 and 108.



109 110 111

TAB (14) 12 14 . 12 . 14 . 12 14 } . 12 12 } 12

full

Diagram showing fret positions and string bends for measures 109, 110, and 111.



112 113

TAB (12) 12 12 12 15 12 15 (15) 12 } } 14

Diagram showing fret positions and string bends for measures 112 and 113.



114 115

TAB (14) 12 14 12 14 X 14 (14) 12 14 . 12 . 14

Diagram showing fret positions and string bends for measures 114 and 115.

116 117

TAB (14) 12 14 12 14 . 14 (14) 12 14 . 12 . 14 0

Diagram showing fret positions and string bends for measures 116 and 117.

Fade-out

118 119

TAB

0 3 2 5 2 2 4 (4) 2 0 0 0

120 121

TAB

(0) 3 2 5 2 2 4 (4) 2 0 0 0

122 123

TAB

(0) 3 2 5 2 2 4 (4) 2 0 0 0

124 125

TAB

(0) 3 2 5 2 2 4 (4) 2 0 0 0

126 127

TAB

(0) 3 2 5 2 2 4 (4) 2 0 0 0

128 129

T  
A  
B

(0) 3 2 5 2 2 4 (4) 2 0 0

130 131

T  
A  
B

(0) 3 2 5 2 2 4 (4) 2 0 0

132 133

T  
A  
B

(0) 3 2 5 2 2 4 (4) 2 0 0

Alt. Ending

134 135

T  
A  
B

0 0 0 0 0 0